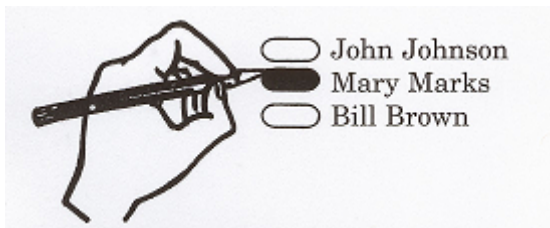


OVAL OPTICAL SCAN VOTING INSTRUCTIONS



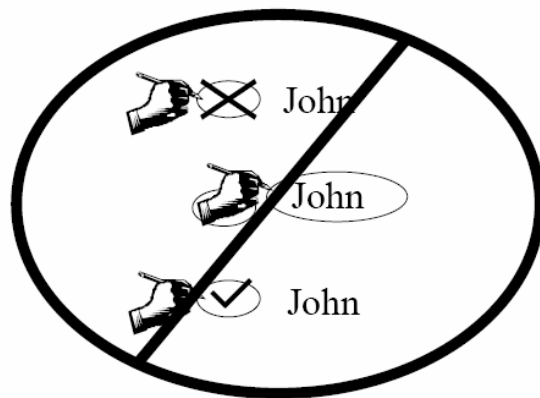
In a *Primary* election *only*, you must restrict your voting to **one political party**. All voters are entitled to vote the Judicial Nominating Ballot and the Latah County Library District Trustee Election.

Use only **black ink** to mark your ballot.
To vote you must blacken the oval **completely**!



DO NOT MARK YOUR BALLOT IN THE FOLLOWING MANNER

NO



If a mistake is made during the voting process, return your ballot to the Issuing Clerk and obtain another.